



Menu Noemi Dal 1988

<https://piatti.menu>
Via Alessandro Manzoni, 8, Gallodoro, Italy
+393994237162

Su questa sito web trovi il [menu completo](#) di Noemi Dal 1988 di Gallodoro. Attualmente sono disponibili 27 piatti e bevande.

Krua Thai 2 Menu



Entrées

SPRING ROLLS

Soups

TOM YUM

Thai

GREEN CURRY

Drinks

DRINKS

Pork

PORK BELLY

Chicken

GRILLED CHICKEN

Appetizer

ROTI WITH PEANUT SAUCE A\$10

Chicken Dishes

THAI MASSAMAN CURRY A\$27

Beef Dishes

BEEF CURRY

Dessert

COCONUT RICE

Starters

ROAST DUCK CURRY A\$38

Noodles

PAD MEE GORENG A\$27

Curries

THAI RED CURRY A\$27

Salad And Soup

TOM YUM SOUP

Asian Specialties

SAMOSA

Thai Dishes

PAD THAI

Thai Quick Special

THAI PANÄNG CURRY A\$27

Chef's Specials

CRISPY PORK BELLY WITH CHINESE BROCCOLI A\$38

Entree

THAI FISH CAKES (4PCS) A\$17

Popular Items

VEGETABLE SPRING ROLL (3PCS) A\$14

Noodles Stir Fried

PAD KEE MAO (VO) A\$27

Thai Lunch

THAI YELLOW CURRY A\$27

Krua Thai 2 Menu



Kalared Flaming Wok

THAI GREEN CURRY A\$27

Restaurant Category

VEGETARIAN

Rice

FRIED RICE CHILLI BASIL A\$27

FRAGRANT STEAM RICE A\$5

Fried Rice

PINEAPPLE FRIED RICE A\$29

FRIED RICE A\$27

Entrees

VEGETABLES CURRY PUFF (3PCS) A\$14

CHIVE CAKE (4PCS) A\$17

Stir Fried

STIR FRIED WITH GINGER A\$27

STIR FRIED WITH CASHEW NUTS A\$27

Wok Stir Fry

MIXED VEGGIE WITH OYSTER SAUCE A\$27

STIR FRIED WITH CHILLI AND THAI BASIL A\$27

STIR FRIED PEANUT SAUCE A\$27

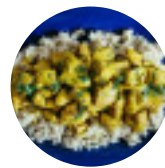
Most Ordered

PORK SPRING ROLL (3PCS) A\$14

KRUA THAI PUFF (3PCS) A\$14

PAD SEE EW (VO) A\$27

Indian



CHICKEN CURRY

CHICKEN CURRY

YELLOW CURRY

ROTI

These Types Of Dishes Are Being Served

CHICKEN

FISH

SOUP

BREAD

SALAD

Ingredients Used

PRAWNS

BROCCOLI

COCONUT

BEEF

DUCK

PORK MEAT

Krua Thai 2 Menu



Krua Thai 2

37 Bridge Road, Melbourne
3121, Australia

Opening Hours:

Monday 17:30 -21:30
Tuesday 17:30 -21:30
Wednesday 17:30 -21:30
Thursday 17:30 -21:30
Friday 17:30 -21:30
Saturday 17:30 -21:30
Sunday 17:30 -21:30

Made with [Menu](#)

