



Kyto2 Menu

<https://menuweb.menu/restaurants/milan-1/kyto>

Via Vigevano, 8, 20144 Milano MI, Italy

+393891652571 - kyto2.it

Categories

Dessert

Donhuri

Entrées

Soups

Donburi

Onigiri

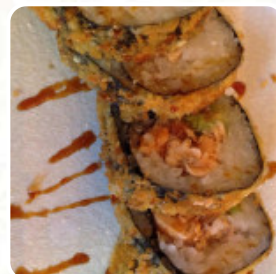
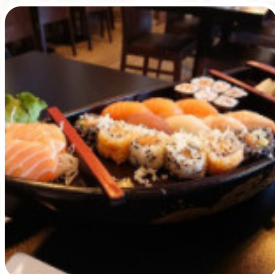
Kushiyaki

SI AVVISA GENTILI CLIENTI

Sarada (Salate)

Yakimono (Gegrilltes)

Non Alcoholic Drinks



[View gallery](#)

[View menu](#)

[View reviews](#)

Kyto2 Menu



Non Alcoholic Drinks

WATER

Nigiri

VEGGIE ONIGIRI 3 €

Sushi Rolls

SUSHI

Pizza

FUSION PIZZA

Gnocchi

GNOCCHI

Sandwiches

CALIFORNIA SANDWICH

Seafood

SEAFOOD 29 €

Side Dishes

WAKAME 5 €

Sushi

SASHIMI

Drinks

BOTTLE OF WATER 2 €

Sauces

MAYO

Main Course

URAMAKI CLASSICI 9 €

Seafood Dishes

EBI TEMPURA 8 €

Udon

GYU MEAT 13 €

Nachspeise

MATCHA TIRAMISU 7 €

Japanese Specialties

YAKITORI 6 €

Special Noodles

UDON 7 €

Maki Roll

MAKI 6 €

Sashimi Menus

SALMON SASHIMI 13 €

Dinner Only

LACHS TATAKI 13 €

Hot Drinks

COFFEE

Coffee

ESPRESSO

Soups And Salads

WAFU SARADA 8 €

Beef Dishes With Rice

SUKIYAKI 26 €

Kyto2 Menu



Signature Dish

BIIFU TATAKI 15 €

Hot Plate

OKONOMIYAKI 6 €

Ademono (Frittiertes)

IKA RINGE 6 €

Small Rice Bowls

UNADON 29 €

1. Select

SHABU SHABU

Main Dishes - Bento Menu

KARAAGE 8 €

Soups

MISO SOUP 5 €

MISO SOUP 4 €

Donburi

GYU DON

EBI TEMPURADON 17 €

Onigiri

EBI ONIGIRI 3 €

ONIGIRISAMON 3 €

Kushiyaki

SHISHAMO 6 €

HAMAGURI 13 €

SI AVVISA GENTILI CLIENTI

PER FAVORE SI PREGA DI LIBERARE
TAVOLO ALLE 22:45

LOCALE CHIUDE ALLE 23:00

Sarada (Salate)

HORENSO SARADA 8 €

WAFU BIFUSARADA 11 €

Yakimono (Gegrilltes)

EBIYAKI 9 €

TOKOYAKI 7 €

Restaurant Category

VEGAN 20 €

DESSERT

Entrées

TSUKEMONO 4 €

TAKOYAKI 7 €

YAKI GYOZA 11 €

AGEDASHI TOFU 5 €

Ingredients Used

SHRIMPS

EDAMAME 5 €

BEEF 26 €

SALMON

Donhuri

SAMON SASHIMI-DON 17 €

TERIYAKI-SAMON-DON 17 €

TERIYAKI-BIFU-DON 16 €

TERIYAKI-CHIKIN-DON 15 €

BIFUSTEEKIDON 22 €

Kyto2 Menu



These Types Of Dishes Are Being Served

FISH

NOODLES

SALAD

DESSERTS

PASTA

Dessert

MATCHA-SCHAKOLADEN-FONDUE 8 €



TIRAMISU

5 €

PANNA COTTA

5 €

MOCHI

6 €

MOCHI EIS

8 €

TARTUFO

CHEESECAKE

5 €

MATCHA CHEESECAKE

8 €

DORAYAKI

6 €

[View gallery](#)

[View menu](#)

[View reviews](#)

Kyto2 Menu



Kyto2

Via Vigevano, 8, 20144 Milano
MI, Italy

Opening Hours:
Friday 12:00-15:00 19:00-23:30

Made with [Menu](#)

