

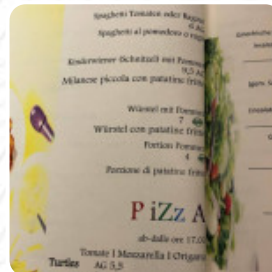
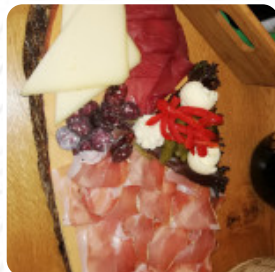


Panorama Menu

<https://menuweb.menu/restaurants/valdaora/pizzeria-panorama-3>
Via Dello Slittino, 3, 39030 Valdaora Di Sopra BZ, VALDAORA, Italy
(+39)474498393,(+39)0474498393

Categories

- Pasta
- Pizza
- Dessert
- Kids
- Warme Vorspeisen / Primi Piatti
- Salads
- Entrées
- Meat
- Starters
- Wochengerichte
- For The Table
- Sandwiches
- Tavern Favorites



[View gallery](#)

[View menu](#)

[View reviews](#)

Panorama Menu



Specials

PETER DEEPER

Secondi

PAPPADELLE MIT FRISCHEN
STEINPILZEN

Main Courses

LASAGNA

Gnocchi

GNOCCHI

Toast

TOAST

Meat Dishes

PORTION FRIES

Drinks

BEER

Schnitzel

SCHNITZEL

Rice

RISOTTO

Starters & Salads

ANTIPASTO

Chicken

GRILLED CHICKEN

Pizza

PROSCIUTTO FUNGHI

Appetizer

MARINATED TENDERLOIN

Griechische Gerichte

CHEF

Fish

SEA BASS

Specialties

FIRECRACKER SHRIMP

Main Course

GRILLED ATLANTIC SALMON

Pizzas

PIZZA SCHORSCH

Main

CHICKPEA FRIES

Calzone

CALZONE

Aktion

CHANTERELLE

Pizza - Mittel Ø 26Cm

CHARLY

Pizza Ø 26Cm

LIGHT

Steinofen Pizza Ø 24Cm

SALAMINO

Panorama Menu



Vegetable

VERDURA GRIGLIATA

Insalate & Antipasti

BUFALA RUCOLA

Pizza, Klein Á 26Cm

GRAN GUSTO

Hot Drinks

COFFEE

Egg Dishes

OMELETTE

Large Plates

TUNA POKE

Burgers And Sandwiches

VERY VEGGIE BURGER

Modifiers

FRANKFURTERS

Shared Plates

PIMENTO CHEESE ARANCINI

Dinner Entrées

ATLANTIC SALMON

Sweet Stuff

WARM TRES LECHES

Shareables

ASPARAGUS FRIES

Rosso

NAPOLI

More Entrees

GRILLED TRIGGER FISH

Shareable Small Plates

SMOKED TROUT DIP

Wood-Fired Pizza

ROYALE WITH CHEESE

Cocktail

MARGARITA

Build A Burger

TAVERN BURGER

Southern Favorites

PRESTIGE FARMS CHICKEN

Small Bites To Start

FRESH FRIED OKRA

Big Bar Sandwiches

INFAMOUS FISH TACOS

Produce

ROSEMARY

Starters And Shared Plates

TAVERN WINGS

Medium 10" Pizzas

MUSHROOM

Panorama Menu



Pizze Bianche (White Pizza)

CONTADINA

Burgers & Sandwiches

BLACK AND BLUE BURGER

Yufka Kebab

PIZZA MALGA

CARNE · FLEISCH

KALBSSCHNITZEL VOM GRILL

Galettes d'Exception Salées (servies avec salades)

MEDITERRANEAN

Deluxe Sandwich Platters

PRIME RIB FRENCH DIP

Filled Paninis

CHICKEN PANINI

Pizza - Medium Approx. 28Cm

PEPERONATA

Sandwich Fare & Fixings

BAKED HAM

Klassische Pizzas

CAZONE (SCHINKEN PILZE)

Uncategorized

ENTRECÔTE MIT POMMES

Sandwiches

GRILLED CHICKEN SANDWICH

CRISPY GROUPER

Tavern Favorites

V&G BUDDHA BOWL

GRILLED CENTER CUT FILET

Pizze Classiche

4 SEASONS

4 CHEESES

Crisp, Cool Salads

BLACK AND BLUE STEAK

ASIAN AHI TUNA

Salads

GREEK SALAD

CAPRICIOSA

POTATO SALAD

Entrées

WURSTEL CON PATATINE FRITTE

AHI TUNA POKE

BANH MI WRAP

Meat

WIENER SCHNITZEL MIT PETERSILIE

SURFLEISCH MIT KARTOFFEL UND
RETTICH

KALBSRÜCKEN MIT WEISSWEINSOSSE

Starters

PROSCIUTTO DI MANZO & RUCOLA

PROSCIUTTO CRUDO RINDERSCHINKEN
& RUCOLA

Panorama Menu



SHRIMP & GRITS

Wochengerichte

ERDÄPFELPLATTLAN MIT KRAUT

LATSCHENKIEFER NUDELN MIT
GRAUKAS, LAUCH UND SPECK

CORDON BLEU NACH SÜDTIROLER ART
MIT APFEL-RÖSTKARTOFFEL UND
SALAT

For The Table

SHRIMP & CRAB 'NACHO' PLATE

J.T.'S KETTLE CHIPS

SIZZLIN' SPINACH FETA FONDUE

Restaurant Category



DESSERT

VEGETARIAN

ITALIAN

Pasta

CARBONARA

RAVIOLI

SPAGHETTI POMODORO

SPAGHETTI PANORAMA

Pizza

SEAFOOD PIZZA

TOMATE, MOZZARELLA, ORIGANO

TOMATE, MOZZARELLA, ORIGANO, MAIS

DIAVOLA

Side Dishes

TRUFFLED PARMESAN FRIES

PORTION FRENCH FRIES

VERDURA COTTA

FRENCH FRIES

Dessert



ICE CREAM

DONUT

CLASSIC CRÈME BRULÉE

WARM CHOCOLATE CAKE

Kids

SPINATKNÖDEL MIT ZERLASSENER
BUTTER

KINDERWIENER (SCHNITZEL) MIT
POMMES

MILANESE PICCOLA CON PATATINE
FRITTE (GEMISCHTER SALAT)

WÜRSTEL MIT POMMES (INSALATA
MISTA)

Warme Vorspeisen / Primi Piatti

HAUSGEMACHTE SCHLUTZKRAPPEN
MIT ZERLASSENER BUTTER

PANORAMA'S KNÖDELTRIS

TAGLIERINI LIMETTENRAHMSOSSE MIT
RÄUCHERLACHS

CARBONARA TIROL

These Types Of Dishes Are Being Served



PIZZA

NOODLES

PASTA

SALAD

DESSERTS

FISH

Panorama Menu



SOUP

TOSTADAS

Ingredients Used



CHOCOLATE

EGG

SPINACH

CHEESE

BACON

PORK MEAT

VEGETABLES

SALAMI

TUNA

GORGONZOLA

SEAFOOD

CAMEMBERT

SHRIMP

[View gallery](#)

[View menu](#)

[View reviews](#)

Panorama Menu



Panorama

Via Dello Slittino, 3, 39030
Valdaora Di Sopra BZ,
VALDAORA, Italy

Opening Hours:
Monday 10:00-22:00
Wednesday 10:00-22:00
Thursday 10:00-22:00
Friday 10:00-22:00
Saturday 10:00-22:00
Sunday 10:00-22:00

Made with [Menu](#)

