

Shakespeare  
Ristorante Pizzeria



## Pizzeria Shakespeare Menu

<https://menuweb.menu/restaurants/roncadelle/pizzeria-shakespeare-1>  
Via Nikolajewka, 14, 25030 Roncadelle BS, RONCADELLE, Italy  
(+39)0302780955 - [pizzeriashakespeare.it](http://pizzeriashakespeare.it)

### Categories

Uncategorized

Dessert

Pizza

Salads

Pasta

Pizza

Pizzas

Pizza - Klein Ø 20Cm

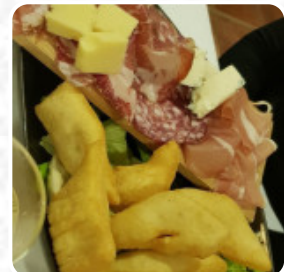
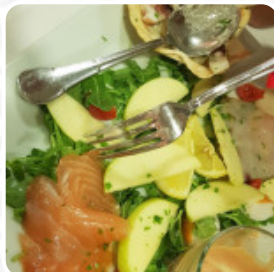
Appetizer

Entrées

10 Most Popular

Mains

Side Dishes



[View gallery](#)

[View menu](#)

[View reviews](#)

# Pizzeria Shakespeare Menu



## Entrées

RISOTTO CON TARTUFO E PORCINI

## 10 Most Popular

SALAME

## Mains

TAGLIATA DI TONNO ALLA GRIGLIA

## Fish Dishes

MIXED GRILL

## Seafood

FRIED CALAMARI

## Meat Dishes

GRILLED BEEF TENDERLOIN

## Sauces

MARINARA

## Fish

SEA BASS

## Starters

BURRATA CON ACCIUGHE

## Cocktails

MACBETH

## Main Course

CASONCELLI DI BARBARIGA

Steinofen Pizza - Mittel Ø 28  
Cm

EGGPLANT PARMIGIANA

## Al Forno\*

BAKED POTATOES

## Pizza - Normal Ø 28Cm

DELICATA

## Omeletts

OCCHIO DI BUE

## Pizza Calzone

NORMAL CALZONE

## Putenfleisch

SCALOPPINE AI PORCINI

## Hamburguesas

4 FORMAGGI CON SALAME

## Bevande

MESSINA CRISTALLI DI SALE 50CL

## Pizza - Klein Ø 26 Cm

GIULIETTA

## Pizza - Mittel Ø 36 Cm

PORCINI

## Pizza Trendsetter Midi Ø 28Cm

MARECHIARO

## Others

SAPORITA

# Pizzeria Shakespeare Menu



## Pizzeria

BRESAOLA E RUCOLA

## Vegetable Dishes

PROSCIUTTO

## Soup & Salads

MIXED SALAD

## Our Pizzas

SPECK E BRIE

## Pizza (Available Also In Thin Crust)

MARGHERITA CON PROSCIUTTO CRUDO

## birre

ICHNUSA 50CL

## Rosso

NAPOLI

## Formaggio

QUATTRO AMICI

## Le Birre

PORETTI 66CL

## Calzones And Pizzas

STUFFED CALZONE

## Chicken And Veal

ZINGARA

## Le Pizze Speciali

NOCINA

## Analcoliche

CHINOTTO IN LATTINA

## COCKTAIL SIGNATURE

AMLETO

## Pizze - Classiche

ROMANA

## Pizze cotte in forno a legna

TREVISANA

## Pizze Bianche (White Pizza)

CONTADINA

## Secondi - Protein

VEGETABLES

## Fishburger, Stick and Chips

GRAN FRITTO MISTO

## Nostri Contorni

VERDURE AL VAPORE

## Specialità della Casa

SICILIAN

## Cicchetti \$10

ASPARAGI E UOVO

## Restaurant Category

ITALIAN

## Tigellone

NORVEGESE

# Pizzeria Shakespeare Menu



## Oven-Fresh Ciabatta

ITALY

## Pizza - Regular Ø 24Cm

TUNA AND ONIONS

## Pizza Small - Ø 22Cm

PRAWNS

## Side Dishes

GRILLED VEGETABLES

FRENCH FRIES

## Pizze

MARGHERITA DOPPIA MOZZARELLA

PUGLIESE

## Pizza - Klein Ø 20Cm

SEA AND MOUNTAINS

PROSCIUTTO AND MUSHROOMS

## Appetizer

TUNA TARTARE

BEEF TARTARE

## Pizza - Groß Ø 33Cm

TYROLEAN

SPINACH AND RICOTTA STUFFED  
CHICKEN BREAST

## Ingredients Used

GORGONZOLA

MUSHROOMS

## Pizza

ARTICHOKES

DELIZIOSA

DOLOMITI

## Pizzas

INFERNO

GORGONZOLA E SALAME

AMERICANA

## Pizze Classiche

4 CHEESES

BUFALA

4 SEASONS

## These Types Of Dishes Are Being Served

PIZZA

PASTA

SALAD

## Pasta



SPINACH

ZUCCHINI

TONNO

SPAGHETTI WITH CLAMS

## Salads

CAPRICIOSA

CAESAR SALAD

GOLOSA

CAPRESE

INSALATA DI MARE TIEPIDA

## Pizza

# Pizzeria Shakespeare Menu



SAUSAGE  
SORRENTINA  
MARGHERITA  
SMOKED  
ESTIVA  
PANCETTA E PATATE  
CALAMARI PIZZA

## Dessert



CREMA CATALANA  
CHEESECAKE  
TARTUFO  
GELATO  
TIRAMISU  
PANNA COTTA  
MIXED CHEESES  
PROFITEROL  
MERINGATA AL FORNO  
MELINDA

## Uncategorized

BAVETTE CON CACIO E PEPE



ACQUA FRIZZANTE IN  
BOTTIGLIA 75CL

ESTATHÈ AL LIMONE IN  
LATTINA

LINGUINE ALLO SCOGLIO IN CROSTA DI  
PANE

FANTA ORIGINAL SLEEK 33 CL

ACQUA NATURALE IN BOTTIGLIA 75CL

COSTATA DI MANZO 500 G

ARANACIATA SAN PELLEGRINO IN  
LATTINA

CARPACCIO 2

NOSTRA INSALATONA

COMPOSTA DI SALUMI CON GNOCCO  
FRITTO E STRACCHINO

RISOTTO CON SPECK E RADICCHIO

RISOTTO ALTA MAREA

PERONI ROSSA RISERVA 50CL

INSALATA DI POLIPO SU MORBIDA DI  
PATATE

COCA-COLA SLEEK 33CL

ESTATHÈ ALLA PESCA IN LATTINA

WAISS 50CL

SPRITE SLEEK CAN 330 ML

[View gallery](#)

[View menu](#)

[View reviews](#)

# Pizzeria Shakespeare Menu



---

## Pizzeria Shakespeare

Via Nikolajewka, 14, 25030  
Roncadelle BS, RONCADELLE,  
Italy

### Opening Hours:

Monday 11:30-14:30  
Tuesday 11:30-14:30 18:00-00:30  
Wednesday 11:30-14:30  
Thursday 11:30-14:30 18:00-  
00:30  
Friday 11:30-14:30 18:00-00:30  
Saturday 11:30-14:30 18:00-  
00:30  
Sunday 11:30-15:00 18:00-00:00

Made with [Menu](#)

